



BOOK OF CRICKET

2017

#LSweet



MADE BY  
*England's Best*





## 6 REASONS WHY GM?

This GM Book of Cricket is designed to assist our trade customers around the World with their purchasing decisions. For more detailed information, see our website at: [www.gm-cricket.com](http://www.gm-cricket.com)

### You should stock GM because:

1. All GM English Willow DXM bats in this Book of Cricket are designed and produced by our own craftsmen and women in our own factory in Nottingham, England
2. The GM factory is the most technologically advanced in the World
3. Only GM blend state of the art DXM technology with over 130 years of craft experience
4. We have direct and absolute control over every aspect of the bat manufacturing process
5. GM Bats lead the industry with continuous improvement through Research & Development. GM 2017 bats are our most advanced
6. GM make more bats in England than all other bat brands put together

No wonder that GM DXM bats are regarded by all as **The Best Bats In The World. Pick up a GM DXM bat and feel the electricity flow!**

Ask other brands where "their" bats are made and by whom? Ask us, and we will tell you about Kevin, Brian, Robert, Dave, Adrian, Mark, Janice and the whole team. Better still, come and visit the factory in Nottingham and see GM British Manufacturing Excellence leading the World for yourself!

NEW

## GM L-SWEET

GM 2017 Mens bats feature three different blade lengths – L555/540/525. Each blade shape is optimised for a specific blade length. As blade length decreases, handle length increases so that the overall length of the bat remains constant.

Shorter blades allow for faster hands through the ball, larger sweet spots and swells, supreme balance and explosive power.



### BOFFIN BAT BANTER

The "sweet spot" of a bat is the region on the blade that produces the maximum ball exit velocity from the bat. The less energy absorbed by the bat on impact the greater the exit velocity. The impact of the ball on the bat causes the whole bat to vibrate, creating wave motions as the bat reacts to the impact forces. These waves (or modes of vibration) have static points (nodes) at fixed positions along the bat. A ball hitting a vibrational node does not excite that mode of vibration thereby losing less energy, the ball goes further and the jarring sensation is reduced or non-existent in the batsman's hands.

The "sweet spot" is also a function of the Centre of Percussion (COP). Hitting near the toe causes the handle to move forward and an impact near the handle pushes the handle back. Hitting at the COP causes no movement to the handle in either direction, less energy is transferred to the player's hands, more energy is transferred to the ball.

By engineering shorter blade designs, the COP and the vibrational nodes can be closer together creating a larger "sweet spot". The longer handle allows for changes in grip position affecting the swing weight and speed of the bat when held closer to or further from the centre of gravity.



Our world leading DXM process implements the findings of a 5 year research programme into bat materials and manufacturing technology. Substantial investment in research, expert advice and machinery means:

- Superior wood conditioning improves the stability and consistency of willow pre-production
- A new paperless design process using state of the art CAD (Computer Aided Design)
- Quantum improvements to the vital pressing operation
- Blade crafting by advanced CAM (Computer Aided Manufacturing)



All GM 2017 English Willow bats use optimised F4.5 Face Dynamics

# BAT INFORMATION

To find the GM bat that best suits your playing style try the unique GM Bat Selector @ <http://www.gm-cricket.com/pages/bat-selector/>

## WEIGHT COMPARISON CHART (PLEASE NOTE)

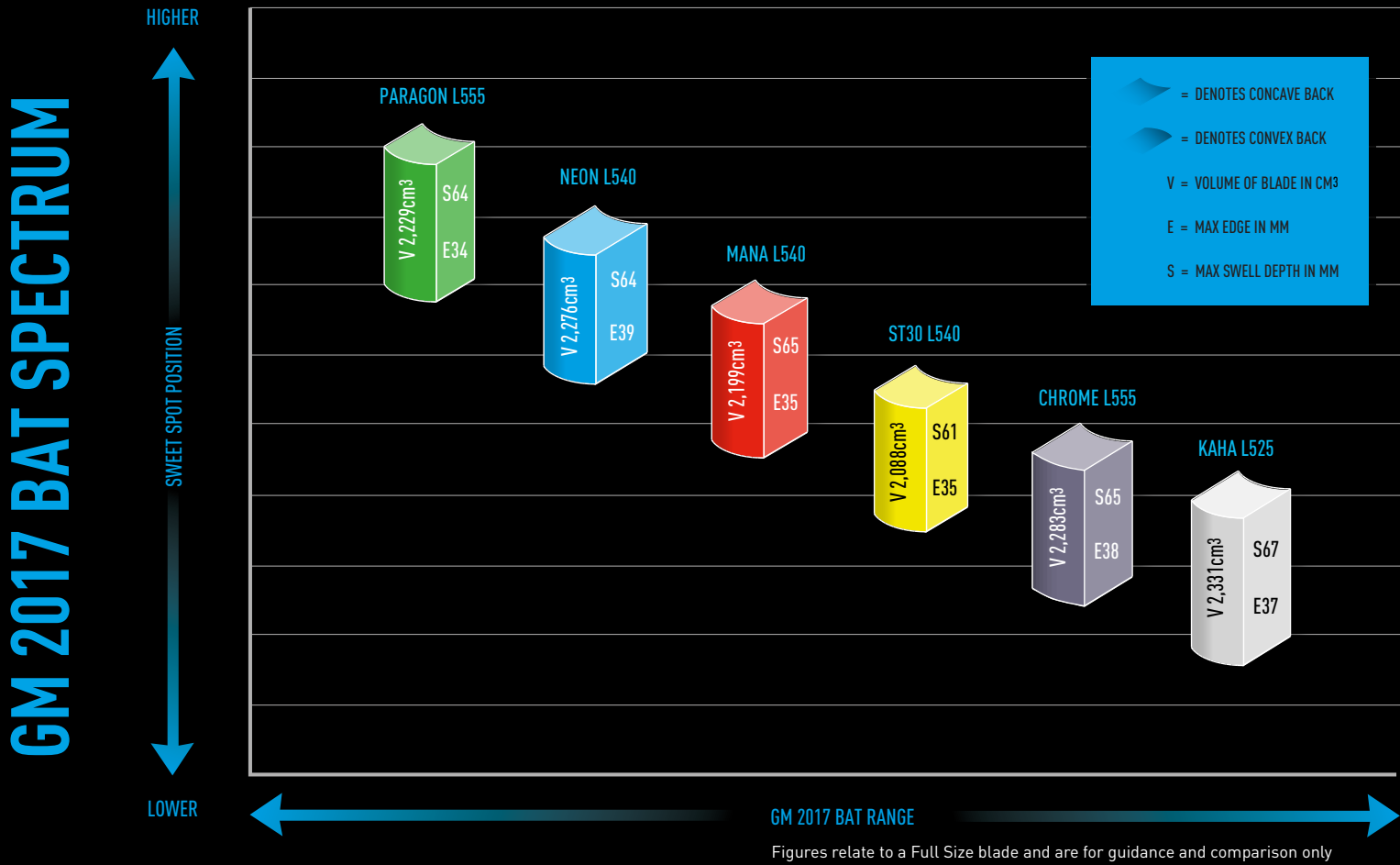
- + All mens bats except 303, will be supplied: ToeTek Now finish/ Short handle/Right handed
- + Long handle, limited to adult sizes, please refer to the pricelist or website for available options

## TYPICAL WEIGHT COMPARISON FULL SIZE, WOMENS AND ACADEMY BATS

This chart is an indicative guide to the weight distribution of full size short handle bats, **including GM NOW!, ToeTek and a single grip.** We endeavour to supply all orders in a balanced range across these weights.

BAT WEIGHT	2LB	1	2	3	4	5	6	7	8	9	10	11	12	13	14	15	3LB
NEON L540																	
CHROME L555																	
MANA L540																	
PARAGON L555																	

BAT WEIGHT	2LB	1	2	3	4	5	6	7	8	9	10	11	12	13	14	15	3LB
KAHA L525																	
ST30 L540 WOMENS																	
CHROME L555 ACADEMY																	



## FULL SIZE BAT SHAPE CHARACTERISTICS

	SWELL DEPTH mm			SWELL POSITION			EDGES mm		BACK PROFILE CONCAVITY		
	VERY BIG	BIG	MEDIUM	HIGH	MIDDLE	LOW	VERY BIG	BIG	PRONOUNCED	DISTINCT	NONE
NEON L540		64					39				
CHROME L555		65					38				
MANA L540		65					35				
PARAGON L555		64					34				
KAHA L525	67						37				
ST30 L540			61				35				

## BAT WEIGHTS: IMPORTANT INFORMATION

Bat weight and performance is dependent on the particular cleft of English Willow that it is made from. No two clefts are the same even from the same tree.

**Heavier willow** - less prone to damage, inherently more powerful.

**Lighter willow** - more manoeuvrable, faster bat speed.

**ALWAYS SELECT A BAT BASED ON ITS PICK UP, HOW IT FEELS TO YOU, NOT ON ITS SCALE WEIGHT.**

**NAKED WEIGHT!**

Your bat, when born in Gunn & Moore's Nottingham, England factory weighs about **3oz less** than its retail weight when fitted with **GM NOW!, ToeTek, labels and a single grip.**



# BAT GRADES

We offer English willow bats in eight qualities:

**ORIGINAL L.E., ORIGINAL, 909, 808,  
707, 606, 404 & 303.**

Each quality is developed around different  
grades of willow.

## GM GRADING - INDUSTRY LEADING

### ORIGINAL L.E. ☆☆☆☆☆

- + The very best unbleached seasoned Grade 1 English Willow
- + Selected for grain structure and weight
- + Limited by willow availability
- + Bats individually tested to ensure 5 Star performance
- + Fitted with top quality treble spring multi-piece cane handle for outstanding feel, flex and control
- + GM NOW! and ToeTek™ finish fitted as standard (see page 12 for details)

### ORIGINAL ☆☆☆☆☆

- + Superior unbleached seasoned Grade 1 English Willow
- + Predominantly straight grained with a hint of colour and minor cosmetic blemishes
- + Fitted with top quality treble spring multi-piece cane handle for outstanding feel, flex and control
- + GM NOW! and ToeTek™ finish fitted as standard (see page 12 for details)

### 909 ☆☆☆☆☆

- + Unbleached seasoned Grade 1 English Willow
- + Predominantly straight grained with colour on one edge and minor cosmetic blemishes
- + Fitted with top quality treble spring multi-piece cane handle for outstanding feel, flex and control
- + GM NOW! and ToeTek™ finish fitted as standard (see page 12 for details)

### 808 ☆☆☆☆☆

- + Superior unbleached seasoned Grade 2 English Willow
- + Minor blemishes, may have some colour to one edge
- + Fitted with good quality treble spring multi-piece cane handle for outstanding feel, flex and control
- + GM NOW! and ToeTek™ finish fitted as standard (see page 12 for details)

### 707 / SIGNATURE ☆☆☆☆☆

- + Seasoned unbleached Grade 2 English Willow
- + Minor blemishes, may have some colour to one edge
- + Fitted with good quality treble spring cane handle
- + GM NOW! and ToeTek™ finish fitted as standard (see page 12 for details)

### 606 ☆☆☆

- + Superior Seasoned unbleached Grade 3 English Willow
- + Minor blemishes, may have some colour to one edge
- + Fitted with good quality treble spring cane handle
- + GM NOW! and ToeTek™ finish fitted as standard (see page 12 for details)

### 404 ☆☆☆

- + Seasoned bleached Grade 3 English Willow
- + Knot marks with some stain/speck
- + Fitted with treble spring cane handle
- + GM NOW! and ToeTek™ finish fitted as standard (see page 12 for details)

### 303 ☆

- + Seasoned Grade 4 English Willow
- + Grained GM polycarbonate DuraCover
- + ToeTek™ toe guard fitted as standard (see page 12 for details)



ORIGINAL  
L.E.

ORIGINAL

909

808



707 /  
SIGNATURE

606

404

303





## SELL MOORE! IN-STORE GM BAT SALES AIDS

### GM® DISPLAY STAND 9610 THE VERSATILE IN-STORE DISPLAY SYSTEM

- + Displays cricket bats neatly and securely
- + Flexible system can display softs and accessories in one neat area



### 9610 A153 GM Branded Slatwall Display Arm with 5 Hooks



### 9610 A152 Lower Slatwall Bat Display Arms (x5)

- + With attachment for cards to explain key features of the bat model displayed



### 9610 A154 Bat Display Locators (Set of 5)

- + Accommodates 20 bats

### 9610 A151 "Astroturf" Bat Display Base

- + 990mm Wide x 550mm Deep

GM SIZING CHART	
MADE BY England's Best	
FULL SIZE	
1.75m & over 5ft 9in & over	
ACADEMY®	
1.68 - 1.75m 5ft 6in - 5ft 9in	
HARROW	
1.63 - 1.68m 5ft 4in - 5ft 6in	
6	
1.57 - 1.63m 5ft 2in - 5ft 4in	
5	
1.50 - 1.57m 4ft 11in - 5ft 2in	
4	
1.44 - 1.50m 4ft 9in - 4ft 11in	
3	
1.37 - 1.44m 4ft 6in - 4ft 9in	
2	
1.29 - 1.37m 4ft 3in - 4ft 6in	
1	
1.20 - 1.29m 3ft 11in - 4ft 3in	
0	
Up to 1.20m Up to 3ft 11in	
RECOMMENDED BAT SIZES	
BATTING GLOVES	
HEIGHT FROM WRIST TO TIP OF MIDDLE FINGER	
1 2 3 4 5 6 7 8 9 10 11 12 13 14 15 16 17 18 19 20 21 22 23 24 25 26 27 28 29 30 31 32 33 34 35 36 37 38 39 40 41 42 43 44 45 46 47 48 49 50 51 52 53 54 55 56 57 58 59 60 61 62 63 64 65 66 67 68 69 70 71 72 73 74 75 76 77 78 79 80 81 82 83 84 85 86 87 88 89 90 91 92 93 94 95 96 97 98 99 100	
BATTING PADS	
HEIGHT FROM WRIST TO TIP OF MIDDLE FINGER	
1 2 3 4 5 6 7 8 9 10 11 12 13 14 15 16 17 18 19 20 21 22 23 24 25 26 27 28 29 30 31 32 33 34 35 36 37 38 39 40 41 42 43 44 45 46 47 48 49 50 51 52 53 54 55 56 57 58 59 60 61 62 63 64 65 66 67 68 69 70 71 72 73 74 75 76 77 78 79 80 81 82 83 84 85 86 87 88 89 90 91 92 93 94 95 96 97 98 99 100	
Check out our GM bat factory tour videos!	

### GM® SIZING CHART 9810 FOR IN-STORE OR HOME USE

- + Hang flat to wall
- + Player stands against chart to determine their bat size
- + Includes batting glove size guide
- + Includes batting pad size guide
- + Approx. 78" x 12"

### GUNN & MOORE RECOMMENDED BAT SIZES

Height of Junior Player	Recommended bat size
Up to 120cm (3'11")	0
120-129cm (3'11" - 4'3")	1
129-137cm (4'3" - 4'6")	2
137-144cm (4'6" - 4'8")	3
144-150cm (4'8" - 4'11")	4
150-157cm (4'11" - 5'2")	5
157-163cm (5'2" - 5'4")	6
163-168cm (5'4" - 5'6")	Harrow
168-175cm (5'6" - 5'9")	Academy
175cm and over (5'9" +)	Full Size





# NEON™ L540

**NEW**

- + SHORTENED L540 BLADE DESIGN FOR DYNAMIC SWEETSPOT
- + HANDLE LENGTH 310mm
- + F4.5 FACE PROFILE
- + MASSIVE EDGES AT DRIVE ZONE
- + SLIGHT OFFSET EDGE FOR INCREASED POWER TO BALANCE RATIO
- + REDUCED SWEEPING SPINE PROFILE FOR SUPERIOR PICK UP
- + MID TO HIGH SWELL POSITION FOR OVERALL STROKEPLAY
- + CONCAVED BACK PROFILE
- + **MADE IN ENGLAND**  
FROM PRIME ENGLISH WILLOW



DYNAMIC grip

## MODELS AVAILABLE

NEON™ DXM® ORIGINAL L.E.

1123 Mens . Harrow . 6 . 5

NEON™ DXM® ORIGINAL

1223 Mens . Harrow . 6 . 5 . 4

NEON™ DXM® 909

1523 Mens . Harrow . 6 . 5

NEON™ DXM® SIGNATURE

1623 Mens

NEON™ DXM® 606

1323 Mens . Harrow . 6 . 5 . 4 . 3

NEON™ DXM® 404

1823 Mens . Harrow . 6 . 5 . 4 . 3 . 2

NEON™ DXM® 303

1723 Mens . Harrow . 6 . 5 . 4 . 3 . 2 . 1



Perfectly scaled junior bats – the shape of all Junior GM English Willow Bats directly replicate the shape of the Men's version

Help your customers configure their bats at [www.gm-cricket.com/pages/bat-selector](http://www.gm-cricket.com/pages/bat-selector)





# CHROME™ L555

**NEW**

- + TRADITIONAL L555 BLADE LENGTH
- + HANDLE LENGTH 295mm
- + F4.5 FACE PROFILE
- + MASSIVE CONTOURED EDGES AT DRIVE ZONE
- + LOW TO MID SWELL POSITION FOR ALLROUND POWER PLAY
- + PARTIALLY CONCAVED BACK PROFILE TO GIVE ADDED STRENGTH
- + A BIG BAT
- + **MADE IN ENGLAND**  
FROM PRIME ENGLISH WILLOW



DYNAMIC grip



## MODELS AVAILABLE

CHROME™ DXM® ORIGINAL L.E.

1113 Mens . Academy . Harrow . 6 . 5

CHROME™ DXM® ORIGINAL

1213 Mens . Academy . Harrow . 6 . 5

CHROME™ DXM® 909

1513 Mens

CHROME™ DXM® SIGNATURE

1613 Mens

CHROME™ DXM® 606

1313 Mens . Academy . Harrow . 6 . 5 . 4

CHROME™ DXM® 404

1813 Mens . Harrow . 6 . 5 . 4

Perfectly scaled junior bats – the shape of all Junior GM English Willow Bats directly replicate the shape of the Men's version

Help your customers configure their bats at  
[www.gm-cricket.com/pages/bat-selector](http://www.gm-cricket.com/pages/bat-selector)





# MANA™ L540

NEW

- + SHORTENED L540 BLADE DESIGN FOR DYNAMIC SWEETSPOT
- + HANDLE LENGTH 310mm
- + F4.5 FACE PROFILE
- + SUBSTANTIAL EDGES AT DRIVE ZONE
- + PRONOUNCED SPINE PROFILE
- + CONCAVED BACK PROFILE
- + ENGINEERED POWER AT DRIVE ZONE
- + FLATTER TOE DESIGN
- + **MADE IN ENGLAND**  
FROM PRIME ENGLISH WILLOW



DYNAMIC grip



## MODELS AVAILABLE

MANA™ DXM® ORIGINAL L.E.

1191 Mens . Harrow . 6 . 5

MANA™ DXM® ORIGINAL

1291 Mens . Harrow . 6 . 5

MANA™ DXM® 909

1591 Mens

MANA™ DXM® 707

1491 Mens

MANA™ DXM® 606

1391 Mens . Harrow . 6 . 5 . 4 . 3

MANA™ DXM® 404

1891 Mens . Harrow . 6 . 5 . 4 . 3

MANA™ DXM® 303

1791 Mens . Harrow . 6 . 5 . 4 . 3 . 2



Help your customers configure their bats at  
[www.gm-cricket.com/pages/bat-selector](http://www.gm-cricket.com/pages/bat-selector)

Perfectly scaled junior bats – the shape of all Junior GM English Willow Bats directly replicate the shape of the Men's version





# PARAGON™ L555

**NEW**

- + TRADITIONAL L555 BLADE LENGTH
- + HANDLE LENGTH 295mm
- + F4.5 FACE PROFILE
- + SUBSTANTIAL CONTOURED EDGES
- + HIGH SWELL POSITION
- + ENGINEERED LIGHTER SWINGWEIGHT
- + FULL CONCAVED PROFILE AND TOE
- + **MADE IN ENGLAND**  
FROM PRIME ENGLISH WILLOW



DYNAMIC grip



## MODELS AVAILABLE

PARAGON™ DXM® ORIGINAL L.E.

1181 Mens

PARAGON™ DXM® ORIGINAL

1281 Mens

PARAGON™ DXM® 909

1581 Mens

PARAGON™ DXM® 606

1381 Mens

PARAGON™ DXM® 404

1881 Mens



Perfectly scaled junior bats – the shape of all Junior GM English Willow Bats directly replicate the shape of the Men's version

Help your customers configure their bats at  
[www.gm-cricket.com/pages/bat-selector](http://www.gm-cricket.com/pages/bat-selector)





# KAHA™ L525

**NEW**

- + SUPERSHORT L525 BLADE LENGTH IDEAL FOR T20
- + HANDLE LENGTH 325mm
- + F4.5 FACE PROFILE
- + ACCENTUATED SPINE PROFILE IN DRIVE ZONE
- + PARTIALLY CONCAVED BACK PROFILE TO GIVE ADDED STRENGTH
- + CONCENTRATED POWER TOWARDS THE TOE
- + LOW SWELL POSITION FOR DRIVING POWER
- + **MADE IN ENGLAND**  
FROM PRIME ENGLISH WILLOW



DYNAMIC grip

## MODELS AVAILABLE

- KAHA™ DXM® ORIGINAL L.E.  
1133 Mens
- KAHA™ DXM® ORIGINAL  
1233 Mens
- KAHA™ DXM® 606  
1333 Mens
- KAHA™ DXM® 404  
1833 Mens



Perfectly scaled junior bats – the shape of all Junior GM English Willow Bats directly replicate the shape of the Men's version

Help your customers configure their bats at  
[www.gm-cricket.com/pages/bat-selector](http://www.gm-cricket.com/pages/bat-selector)





# ST30™ L540

**NEW**

- + L540 BLADE LENGTH
- + HANDLE LENGTH 280mm
- + F4.5 FACE PROFILE
- + SPECIALLY DESIGNED FOR WOMEN
- + LIGHTWEIGHT BUT POWERFUL
- + EXTENDED SWEETSPOT
- + FULL CONCAVED BACK PROFILE
- + SUBSTANTIAL CONTOURED EDGES
- + **MADE IN ENGLAND**
- + FROM PRIME ENGLISH WILLOW



DYNAMIC grip



## MODELS AVAILABLE

- ST30™ DXM® ORIGINAL  
1243 Womens
- ST30™ DXM® 606  
1343 Womens
- ST30™ DXM® 404  
1843 Womens

Perfectly scaled junior bats – the shape of all Junior GM English Willow Bats directly replicate the shape of the Men's version

Help your customers configure their bats at [www.gm-cricket.com/pages/bat-selector](http://www.gm-cricket.com/pages/bat-selector)



## ACADEMY AND WOMENS BATS



	Womens	Academy
Blade width	108mm	104mm
Blade length	540mm	555mm
Handle length	280mm	280mm

### TO GIVE YOUR BEST YOU NEED THE RIGHT EQUIPMENT.

GM manufacture two bespoke sizes of bat - ACADEMY for taller youths and, reflecting the tremendous growth in Womens Cricket, a bespoke WOMENS size. Both sizes are designed from the outset for their specific players, custom tuned for pick-up and power.

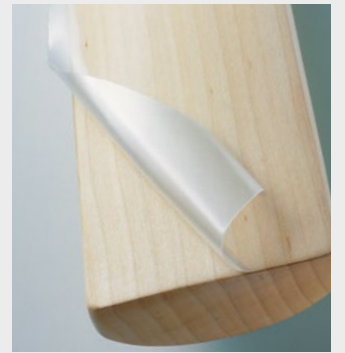
#### MODELS AVAILABLE

CHROME™ DXM® ORIGINAL L.E.  
1113 Academy  
CHROME™ DXM® ORIGINAL  
1213 Academy  
CHROME™ DXM® 808  
5S13 Academy  
CHROME™ DXM® 606  
1313 Academy

ST30™ DXM® ORIGINAL  
1243 Womens  
ST30™ DXM® 808  
5S43 Womens  
ST30™ DXM® 606  
1343 Womens  
ST30™ DXM® 404  
1843 Womens

### GM BAT CARE

#### FACTORY FITTED PROTECTION



### GM NOW!

- + “Knocked-in” by the batmaker in-house
- + Raw linseed oil applied to reduce cracking and splitting by maintaining the moisture level of the blade
- + Clear anti-scuff cover applied to the face and edges to increase blade durability



### TOETEK™

- + DriGuard applied to resist damp and minimise toe swelling
- + Specially shaped resilient shield fitted to toe of bat
- + Reduces toe damage and feathering that is often caused by tapping at the crease
- + Further barrier to damp

### REPAIR SERVICE

- + Rehandling
- + Refurbishment (sand and polish, new grip, new stickers)
- + General repairs

### CONTACT

Customer Services,  
Nottingham for details

**0115 985 3500**

assist@unicorngroup.com





# KASHMIR WILLOW BATS

MADE IN INDIA



**NEW**

## MANA™

MANA™ 202 1903  
MENS • HARROW  
• 6 • 5 • 4

- + Grade 1 Kashmir Willow
- + 'Ready to play' – Covered for immediate use and durability
- + ToeTek™ protection reduces toe damage and increases resistance to damp
- + Treble spring handle
- + Dynamic grip



**NEW**

## NEON™

NEON™ 101 1909  
MENS • HARROW • 6 •  
5 • 4 • 3 • 2 • 1 • 0 • -1

- + Great Value Kashmir Willow - Natural finish
- + Dynamic grip

**NEW**

## PARAGON™

1916  
MENS • HARROW • 6  
• 5 • 4 • 3 • 2 • 1 • 0

- + Entry Level Kashmir Willow



### IMPORTANT

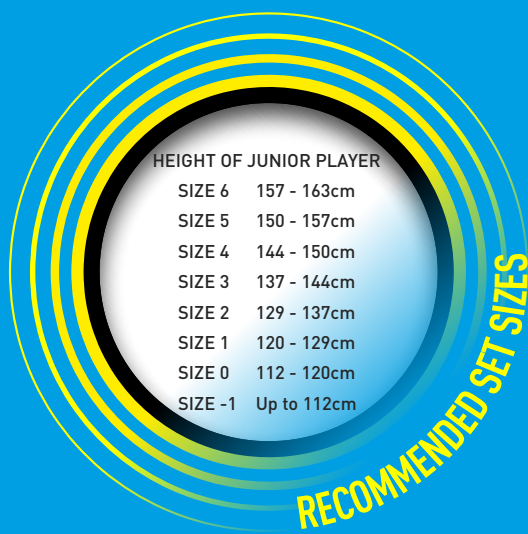
Bats from India and Pakistan have some different characteristics from English made bats and even though the faces of these bats have been pressed to give a tough resilient surface, nevertheless some surface cracks and indentations will, in all probability, appear in use. Such markings should be ignored; they are normal for this type of timber and will not detract from the continuing good performance of the bat.

STEPHEN COOK  
SOUTH AFRICA



# GM YOUNG GUNN

THE GM 'YOUNG GUNN' RANGE HAS BEEN SPECIALLY DESIGNED TO GIVE FUTURE INTERNATIONAL CRICKETERS A FLYING START TO THEIR CAREERS. ALL PRODUCTS FEATURED IN THIS RANGE HAVE BEEN APPROVED AND ENDORSED BY TEAM GM.



NEW

## NEON™ CRICKET SET 4242

SIZE 6 • 4 • 2 • 0

Contains:

- + 1 NEON Cricket Bat
- + 1 pair of ambidextrous Batting Gloves
- + 1 Soft Tennis/Cricket Ball
- + 4 Stumps & 1 Bail
- + Durable carry bag



NEW

## MANA™ CRICKET SET 4246

SIZE 5 • 3 • 1 • -1

Contains:

- + 1 MANA Cricket Bat
- + 1 Soft Tennis/Cricket Ball
- + 4 Stumps & 1 Bail
- + Durable carry bag



NEW

## PARAGON™ CRICKET SET 4248

SIZE 2 • 1 • 0 • -1

Contains:

- + 1 PARAGON Cricket Bat
- + 1 Soft Tennis/Cricket Ball
- + Durable carry bag





JAKE BALL  
ENGLAND



### ICON® ALL-WEATHER CRICKET SET 4238

SIZE 6 • 4

Contains:

- + 1 ICON Moulded Cricket Bat
- + 3 All-Weather Stumps
- + 1 Soft Rubber Ball
- + 1 All-Weather Base
- + Durable carry bag



**NEW**

### 101 PAD & GLOVE CRICKET SET 4228

SIZE MINI

Contains:

- + 1 pair of ambidextrous navy Batting Pads
- + 1 pair of ambidextrous navy Batting Gloves



**NEW**

### NEON™ MINI CRICKET SET 4220

ONE SIZE

Contains:

- + 1 set of Stumps on a wooden base,
- + 1 set of Bails, 1 Miniature Bat and 1 Miniature Tennis Ball
- + Great fun for indoor and outdoor use



### MOGUL™ AUTOGRAPHING SET 4216

ONE SIZE

- + Collect autographs with this unique set comprising a 32 page Autographing Book, Miniature Bat and Pen



### WHEELIE BIN WICKETS 4024

- + Pack of 20 self adhesive wickets



# BATTING PADS



**XRD® Technology is all about action – and impact!**

Like all PORON microcellular products, XRD Extreme Impact Protection is open cell, comfortable, flexible, breathable and lightweight, the XRD protection difference is especially apparent at high speed impact.

The soft contouring material instantly dissipates force upon impact absorbing up to 90% of energy, by forming a comfortable protective shell that shields the body from impact better than other protective foams currently available. As a batsman this allows you to focus on the intensity and challenge of the game situation, not the impact.

On the measure that matters most - absorbing more impact energy at higher speeds - Need we say more?



**NEW**

**ORIGINAL  
LIMITED EDITION**

5020  
OSM • MENS • SMALL MENS

## BATTING PADS SPECIFICATIONS

		APPROX WEIGHT PER PAIR (KG)	RH/LH	AMBI	FACING			CONSTRUCTION		VERTICAL BOLSTER					ONE-PIECE LOW DENSITY INTERIOR BOLSTER	STITCHED-IN TOP HAT	KNEE LOCATOR					STRAPS			INSTEP					
					PRO	PU	PVC	TRADITIONAL COTTON/ CANE	HIGH DENSITY FOAM/REVERSE CANE	COMFORT FOAM	LOW DENSITY FOAM	PLASTIC FIBRE	U FOAM	RAW COTTON			XRD	PLASTIC FIBRE	TRI- LAYER FOAM	DUAL LAYER FOAM	LD FOAM/ COTTON	LOW DENSITY FOAM	COMFORT	2"	1"	COMFORT	PU	MESH	PVC	
5020	Original LE	2.15	•		•			•		•	•	•			•	•	•	•	•			•••	••	•	•	•	•			
5025	Original	2.05	•			•			•	•	•	•			•	•	•	•	•			•••	••	•	•	•	•			
5022	909	2.15	•			•		•		•	•	•			•	•	•	•	•			•	••	•	•	•	•			
5534	808 LE	2.00	•			•			•	•	•				•	•	•	•	•			•	••	•			•			
5532	808	2.10	•			•		•		•	•				•	•	•	•	•				••	•			•			
ST32	ST30	2.10	•			•		•		•	•				•	•	•	•	•				••	•			•			
5030	606	1.85	•			•			•				•		•	•		•	•				••	•			•			
5028	505	1.75	•			•		•			•				•	•	•		•				••	•			•			
5027	303	1.85		•			•	•			•			•		•				•	•			•	••					•
5056	202	1.30 [Yth]		•			•	•			•										•				•••					•





Personal Protective Equipment. All Gunn & Moore Personal Protective Equipment complies with Personal Protective Equipment (EC Directive) Regulations S.I. 1192/3139 implementing EC Directive 89/686/EEC. All protective materials used in our batting gloves and leg guards have been tested and conform to Impact Resistance BS 6183, British Standards Institution.



NEW



ORIGINAL

5025  
OSM • MENS • SMALL MENS

NEW



909

5022  
OSM • MENS • SMALL MENS



Comfort straps on ORIGINAL LE, ORIGINAL, 909 & 808 LE batting pads



Embossed strap tabs and stylish co-ordinated pad straps



XRD® Extreme Impact Protection knee locator for maximum protection



Extensive use of debossed sidewing detail throughout the range

# BATTING PADS

PAD LENGTH

HEIGHT FROM TOP OF INSTEP TO MIDDLE OF KNEE

11.75" 12.75" 13.75" 14.75" 16.5" 17" 18" 19"

JUNIOR XTRA SMALL

JUNIOR SMALL

JUNIOR

YOUTHS

WOMENS

SMALL MENS

MENS

OSM





# BATTING PADS



NEW

606

5030  
OSM • MENS • SMALL MENS • YOUTHS • JUNIOR

FANTASTIC  
VALUE



NEW

505

5028  
MENS • YOUTHS • JUNIOR • JUNIOR SMALL

BEN DUCKETT  
ENGLAND

## BATTING PADS SPECIFICATIONS

		APPROX WEIGHT PER PAIR (KG)	RH/LH	AMBI	FACING			CONSTRUCTION		VERTICAL BOLSTER					ONE-PIECE LOW DENSITY INTERIOR BOLSTER	STITCHED-IN TOP HAT	KNEE LOCATOR					STRAPS			INSTEP					
					PRO	PU	PVC	TRADITIONAL COTTON/ CANE	HIGH DENSITY FOAM/REVERSE CANE	COMFORT FOAM	LOW DENSITY FOAM	PLASTIC FIBRE	U FOAM	RAW COTTON			XRD	PLASTIC FIBRE	TRI-LAYER FOAM	DUAL LAYER FOAM	LD FOAM/ COTTON	LOW DENSITY FOAM	COMFORT	2"	1"	COMFORT	PU	MESH	PVC	
5020	Original LE	2.15	•		•			•		•	•	•			•	•	•	•	•	•	•	•	•	•	•	•	•	•	•	•
5025	Original	2.05	•			•			•	•	•	•			•	•	•	•	•	•	•	•	•	•	•	•	•	•	•	•
5022	909	2.15	•			•		•		•	•	•			•	•	•	•	•	•	•	•	•	•	•	•	•	•	•	•
5534	808 LE	2.00	•			•			•	•	•				•	•	•	•	•	•	•	•	•	•	•		•	•	•	•
5532	808	2.10	•			•		•		•	•	•			•	•	•	•	•	•	•	•	•	•	•		•	•	•	•
ST32	ST30	2.10	•			•		•		•	•	•			•	•	•	•	•	•	•	•	•	•	•		•	•	•	•
5030	606	1.85	•			•			•				•		•	•	•	•	•	•	•	•	•	•	•		•	•	•	•
5028	505	1.75	•			•		•			•				•	•		•		•		•	•	•	•		•	•	•	•
5027	303	1.85		•			•	•			•			•		•			•		•		•	•	•					•
5056	202	1.30 [Yth]		•			•	•			•					•				•				•	•	•				•





Personal Protective Equipment. All Gunn & Moore Personal Protective Equipment complies with Personal Protective Equipment (EC Directive) Regulations S.I. 1192/3139 implementing EC Directive 89/686/EEC. All protective materials used in our batting gloves and leg guards have been tested and conform to Impact Resistance BS 6183, British Standards Institution.



**NEW**

**303**

5027  
MENS • YOUTHS • JUNIOR • JUNIOR SMALL

**AMBIDEXTROUS**



**DUAL  
WINGED  
PAD**

**NEW**

**202**

5056  
MENS • YOUTHS • JUNIOR  
JUNIOR SMALL • JUNIOR XTRA SMALL



## BATTING PADS PAD LENGTH

HEIGHT FROM TOP OF INSTEP TO MIDDLE OF KNEE

11.75" 12.75" 13.75" 14.75" 16.5" 17" 18" 19"

JUNIOR XTRA SMALL

JUNIOR SMALL

JUNIOR

YOUTHS

WOMENS

SMALL MENS

MENS

OSM





# BATTING GLOVES



### The Best Repeated Impact Absorption Material!

- + Soft and contouring against the body, yet instantly dissipates force upon impact
- + Absorbs up to 90% of energy when impacted at high strain rates
- + Maintains performance beyond the life of the product
- + Consistent repeated impact absorption
- + Excellent compression-set resistance
- + Microban® antimicrobial protection inhibits the growth of stain and odour-causing bacteria



ADAM LYTH  
ENGLAND

**NEW**

**ORIGINAL  
LIMITED EDITION**



5175  
OSM • MENS • SMALL MENS

## BATTING GLOVES SPECIFICATIONS

		APPROX WEIGHT PER PAIR (KG)	PALM			PALM WEAR PATCH	BACK OF HAND			FINGER			ROLLS			BACK OF HAND FILLING				MULTI SECTION BACK OF HAND	SOFT-FILL COMFORT	COMFORT LINING	TWO-PIECE THUMB	SIDE BAR PROTECTION	SWEATBAND	
			PITTARD LEATHER	CALF LEATHER	SPLIT LEATHER		PRO PU	PU	PVC	XRD & FIBRE OVERFLAPS WITH RAW COTTON	XRD & FIBRE	HD FOAM & FIBRE OVERFLAPS WITH RAW COTTON	HD FOAM & FIBRE	RAW COTTON & FIBRE	RAW COTTON	HD FOAM	PLASTIC FIBRE	MD FOAM	RAW COTTON						DOUBLE SIDED	SINGLE SIDED
5175	Original LE	0.50	•			•	•			•		•				•	•			•	•	•	•	•	•	
5177	Original	0.45		•		•		•				•				•	•	•		•	•	•	•	•	•	
5192	909	0.50		•		•				•		•				•	•			•	•	•	•	•	•	
5548	808 LE	0.40		•				•						•		•	•			•	•	•	•	•	•	
5546	808	0.48		•					•				•			•				•	•	•	•	•	•	
5T46	5T30	0.48		•					•				•			•				•	•	•	•	•	•	
5194	606	0.47		•												•				•	•	•	•	•	•	
5196	505	0.45		•						•						•		•		•	•	•	•	•	•	
5179	303	0.48		•					•							•				•	•	•	•	•	•	
5197	202	0.42			•					•					•				•		•	•	•	•	•	





Personal Protective Equipment. All Gunn & Moore Personal Protective Equipment complies with Personal Protective Equipment (EC Directive) Regulations S.I. 1192/3139 implementing EC Directive 89/686/EEC. All protective materials used in our batting gloves and leg guards have been tested and conform to Impact Resistance BS 6183, British Standards Institution.



#TomSays  
Tom C, GM Product Supremo  
"Greater back of hand protection  
across the top of the range"



**NEW** ORIGINAL

5177  
OSM • MENS • SMALL MENS

**NEW**

909

5192  
OSM • MENS • SMALL MENS

## BATTING GLOVES SPECIFICATIONS

		APPROX WEIGHT PER PAIR (KG)	PALM			PALM WEAR PATCH	BACK OF HAND			FINGER ROLLS			BACK OF HAND FILLING				MULTI SECTION BACK OF HAND	SOFT-FILL COMFORT	COMFORT LINING	TWO-PIECE THUMB	SIDE BAR PROTECTION	SWEATBAND		
			PITTARD LEATHER	CALF LEATHER	SPLIT LEATHER		PRO PU	PU	PVC	XRD & FIBRE OVERLAPS WITH RAW COTTON	XRD & FIBRE OVERLAPS WITH RAW COTTON	HD FOAM & FIBRE OVERLAPS WITH RAW COTTON	HD FOAM & FIBRE	RAW COTTON & FIBRE	RAW COTTON	HD FOAM						PLASTIC FIBRE	MD FOAM	RAW COTTON
5175	Original LE	0.50	•			•	•			•		•			•	•			•	•	•	•	•	
5177	Original	0.45		•		•		•			•		•		•	•			•	•	•	•	•	
5192	909	0.50				•					•				•	•			•	•	•	•	•	
5548	808 LE	0.40		•				•					•		•	•			•	•	•	•	•	
5546	808	0.48		•					•			•			•				•	•	•	•	•	
5T46	ST30	0.48		•				•				•			•	•			•	•	•	•	•	
5194	606	0.47							•					•					•	•	•	•	•	
5196	505	0.45		•						•				•		•			•	•	•		•	
5179	303	0.48		•									•						•	•	•	•		•
5197	202	0.42			•					•							•		•	•	•	•		•



GM BAT INFO

GM IN-STORE

ENGLISH  
WILLOW BATS

KASHMIR BATS

YOUNG GUNN

BATTING PADS

BATTING GLOVES

WICKET KEEPING

WOMENS RANGE

PROTECTION

HELMETS

BAGS

FOOTWEAR

TROUSERS

SHIRTS

KNITWEAR  
& FLEECEs

PERFORMANCE  
TRAINING  
WEAR

CRICKET BALLS

RUBBER GRIPS

ACCESSORIES

5 STAR

www.gm-cricket.com



gmcricket



## BATTING GLOVES

**NEW**

**606**

5194

OSM • MENS • SMALL MENS •  
YOUTHS • JUNIOR

**NOW  
AVAILABLE  
IN SMALL  
MENS**



**NEW**

**505**

5196

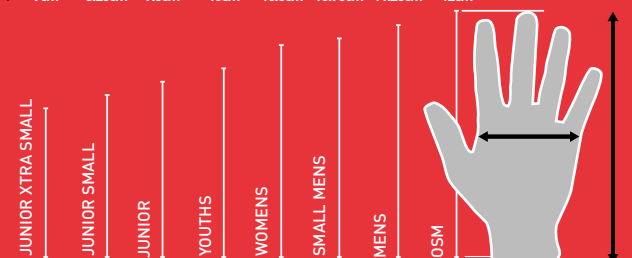
MENS • YOUTHS •  
JUNIOR • JUNIOR SMALL

DANIEL BELL DRUMMOND  
ENGLAND

## BATTING GLOVES

HEIGHT FROM WRIST TO TOP OF MIDDLE FINGER

↑	14.5cm	15.75cm	17cm	18.25cm	19cm	19.5cm	20.75cm	22cm
↔	7cm	8.25cm	9.5cm	10cm	10.5cm	10.75cm	11.25cm	12cm







Personal Protective Equipment. All Gunn & Moore Personal Protective Equipment complies with Personal Protective Equipment (EC Directive) Regulations S.I. 1192/3139 implementing EC Directive 89/686/EEC. All protective materials used in our batting gloves and leg guards have been tested and conform to Impact Resistance BS 6183, British Standards Institution.



**NEW**  
**303**

5179  
MENS • YOUTHS • JUNIOR • JUNIOR SMALL



**NEW**  
**202**

5197  
MENS • YOUTHS • JUNIOR • JUNIOR SMALL • JUNIOR XTRA SMALL

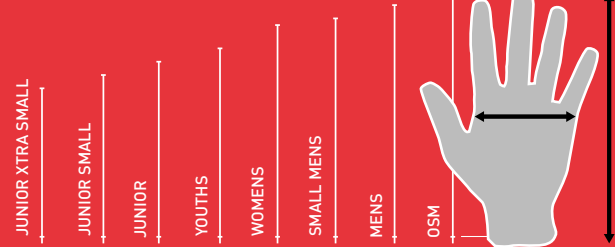


ROSS TAYLOR  
NEW ZEALAND

BATTING GLOVES

HEIGHT FROM WRIST TO TOP OF MIDDLE FINGER

↑	14.5cm	15.75cm	17cm	18.25cm	19cm	19.5cm	20.75cm	22cm
↔	7cm	8.25cm	9.5cm	10cm	10.5cm	10.75cm	11.25cm	12cm







# WICKET KEEPING RANGE

DANE VILAS  
SOUTH AFRICA



NEW

ORIGINAL

5065  
MENS • YOUTHS • JUNIOR



NEW

909

5067  
MENS



NEW

606

5070  
MENS • YOUTHS • JUNIOR



NEW

303

5072  
MENS • YOUTHS • JUNIOR • JUNIOR SMALL

## INNER GLOVES

ALL INNER GLOVES  
PACKAGED IN HANGING  
BAG WITH DISPLAY CARD



NEW

FULL CHAMOIS  
INNER 5302  
MENS

- + Superb feel and all day comfort
- + Top quality all chamois leather
- + Breathable fingers for added comfort
- + Double sided sweatband with Velcro closure



NEW

CHAMOIS PADDED  
PALM 5304  
MENS • YOUTHS

- + Lycra back of hand
- + Padded chamois palm
- + Double sided sweatband with Velcro closure

## WICKET KEEPING PADS SPECIFICATIONS

		APPROX WEIGHT PER PAIR (KG)	FACING		FACE FILLING				VERTICAL BOLSTER			STRAPS			INSTEP	
			PU	PVC	HIGH DENSITY FOAM	HD FOAM/ CANE	DUAL LAYER FOAM	CANE/LOW DENSITY FOAM	COMFORT/LOW DENSITY FOAM	COMFORT FOAM	LOW DENSITY FOAM	COMFORT	2"	1"	COMFORT	MESH
5065	Original	0.90	•		•				•			••	••		•	•
5067	909	1.25	•			•			•				••			•
ST67	ST30	1.25	•			•			•				••			•
5S74	808 Shinguard	0.65		•	•					•		••	••			•
5070	606	0.85		•			•			•			•		•	•
5072	303	1.00		•				•			•			••		•



Shape and specification of Original LE WK gloves designed and developed by Chris Read

CHRIS READ  
ENGLAND

NEW



**COTTON  
PADDED  
PALM** 5307  
MENS • YOUTHS

- + Lycra back of hand
- + Cotton padded palm
- + Elasticated wristband



**COTTON  
INNER** 5308  
MENS • YOUTHS

- + Quality cotton inner glove
- + Soaks up sweat which in turn gives longer life to gloves



**FINGERLESS  
INNERS** 5309  
MENS • YOUTHS • JUNIOR

- + Cotton fingerless inner glove for Batsmen worn with Batting Gloves
- + Soaks up sweat which in turn gives longer life to Batting Gloves



NEW

**ORIGINAL  
LIMITED EDITION**

5205  
OSM • MENS



NEW

**909**

5201  
OSM • MENS



NEW

**303**

5208  
MENS • YOUTHS • JUNIOR • JUNIOR SMALL



NEW

**ORIGINAL**

5202  
OSM • MENS • YOUTHS • JUNIOR



NEW

**606**

5207  
MENS • YOUTHS • JUNIOR



**ALL WICKET  
KEEPING GLOVES**  
are available with  
rounded cuffs to special  
order - minimums apply



## WICKET KEEPING GLOVES SPECIFICATIONS

		BACK OF HAND				LINING			PALM FACING			PALM				CUFFS		'T' WEB (LAW 40.2)
		ANILINE LEATHER	PU	PVC		FINGER TABS	FULL LEATHER	PU	COTTON	OCTOPUS PALM	NEOPRENE PALM	PIMPLE RUBBER PALM	SHEEPSKIN LEATHER	CALF LEATHER	PVC	GM COTTON PALM FILLING	CANED	
5205	Original LE	•			•	•			•			•			•		•	•
5202	Original	•			•	•			•			•			•	•		•
5201	909	•			•		•			•			•		•	•		•
ST01	ST30	•			•		•			•			•		•	•		•
5207	606		•		•		•				•		•		•		•	•
5208	303			•				•			•			•	•		•	•





## WOMENS RANGE

DEVELOPED IN CONJUNCTION WITH LEADING  
WOMENS CRICKETER, SARAH TAYLOR

**NEW**

### ST30

1243 Original  
5S43 808  
1343 606  
1843 404

See page 11 for  
full features



**SUPER COUNTY**  
3019 5oz



**NEW**

### ST30

**BATTING GLOVES** ST46  
WOMENS

See the glove chart on page 20  
for full features

SPECIFICALLY  
DESIGNED FOR  
**WOMENS**  
CRICKET

**NEW**

### ST30

**BATTING PADS**  
ST32  
WOMENS

See the pad chart  
on page 16 for  
full features





SARAH TAYLOR  
ENGLAND



**NEW**

**ST30**

**WICKET KEEPING  
GLOVES ST01**  
WOMENS

See the wicket keeping  
gloves chart on page 25  
for full features

**NEW**

**ST30**

**WICKET  
KEEPING  
PAD ST67**  
WOMENS

See the wicket  
keeping pad  
chart on  
page 24 for  
full features



**NEW**

**ST30 SHIRT 7019**

6 • 8 • 10 • 12 • 14 • 16 • 18

- + Ultra modern, sleek design
- + One piece, self fabric 'V' neck collar
- + Quick drying 100% Polyester interlock jersey 160g



**NEW**

**ST30 TROUSERS 7037**

6 • 8 • 10 • 12 • 14 • 16 • 18

- + 100% Two-way stretch Polyester fabric
- + Ladies cut
- + Fully elasticated waist
- + Two side pockets
- + Unfinished leg

ANYA SHRUBSOLE  
ENGLAND





## PERSONAL PROTECTION

**NEW**

### ORIGINAL LIMITED EDITION

**THIGH PAD SET 5632**  
MENS • SMALL MENS •  
YOUTHS • JUNIOR

- + Moulded 15mm High Density Foam protection
- + Comfort foam lining for all day comfort
- + Removable/adjustable Inner Thigh Pad
- + Soft elasticated straps with secure 'touch' fastening



**NEW**

### ORIGINAL

**THIGH PAD 5602**  
MENS • SMALL MENS •  
YOUTHS

- + Professional protection
- + Dual layered High-Density Foam
- + Pre-shaped for comfort with soft towelling backing
- + Soft elasticated straps with secure 'touch' fastening



**NEW**

### ORIGINAL LIMITED EDITION

**FOREARM GUARD 5615**  
MENS • YOUTHS

- + Professional protection
- + High density foam with pre-shaped fibre insert
- + Removable washable polyester/spandex sleeve



**NEW**

### ORIGINAL

**INNER THIGH PAD 5614**  
MENS

- + Protects the inner thigh, back leg
- + Dual layered High-Density Foam
- + Pre-shaped for comfort with soft towelling backing
- + Soft elasticated strap with secure 'touch' fastening and cotton waist 'loops'
- + Can be used with GM thigh pads



**NEW**

### ORIGINAL

**FOREARM GUARD 5617**  
MENS • YOUTHS • JUNIOR

- + Dual layered High-Density Foam
- + Pre-shaped for comfort with soft towelling backing
- + Double sided sweatband and soft elasticated strap closure with secure 'touch' fastening



DAVID MALAN  
ENGLAND



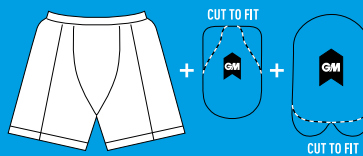




**909 NEW**

**THIGH PAD 5606**  
MENS • YOUTHS • JUNIOR

- + Superb value
- + Dual layered high density foam
- + Ambidextrous lightweight design
- + Soft elasticated straps with secure "touch" fastening



**909 NEW**

**SHORTS & PROTECTIVE  
PADDING SET 5627**  
XXL • XL • L • M • S •  
YOUTHS • JUNIOR

- + Washable polyester/spandex shorts
- + Integral pouches for correct location of padding including abdominal guard pouch
- + Abdominal guard not included
- + High density moulded foam thigh pad and inner thigh pad - cut-to-fit for right handed or left handed stance



**909**

**INNER THIGH PAD 5611**  
MENS • YOUTHS • JUNIOR

- + Dual layered high density foam
- + Ambidextrous lightweight design
- + Soft elasticated strap with secure "touch" fastening

**BOXER SHORT 5625**

XXL • XL • L • M • S • LB • MB • SB

- + Special blend stretch cotton for comfort and fit
- + Pouch for abdominal guard
- + Both GM abdominal guards can be used



**BOXER BRIEF 5622**

XXL • XL • L • M • S • LB • MB • SB

- + Special blend stretch cotton for comfort and fit
- + Pouch for abdominal guard
- + Both GM abdominal guards can be used



**909 NEW**

**FOREARM GUARD 5619**  
MENS • YOUTHS • JUNIOR

- + Dual layered high-density foam
- + Pre-shaped for comfort
- + Soft elasticated straps closure with "touch" fastening

**ATHLETIC SUPPORT 5626**

XXL • XL • L • M • S • LB • MB • SB

- + Special blend stretch cotton for comfort and fit
- + Pouch for abdominal guard
- + Both GM abdominal guards can be used



**ANATOMICALLY SHAPED ABDOMINAL  
PADDED GUARD 5630**

MENS • YOUTHS • BOYS • SMALL BOYS

- + Strong plastic slip-in guard, padded



**ANATOMICALLY SHAPED ABDOMINAL  
PADDED GUARD 5620**

MENS • YOUTHS • BOYS • SMALL BOYS

- + Strong plastic slip-in traditional guard, padded



SAMI ASLAM  
PAKISTAN

# GM HELMETS



CHRIS READ  
ENGLAND



AVAILABLE  
COLOURS

## ICON<sup>®</sup> GEO HELMET 5016

SENIOR LARGE • SENIOR  
SENIOR SMALL • JUNIOR

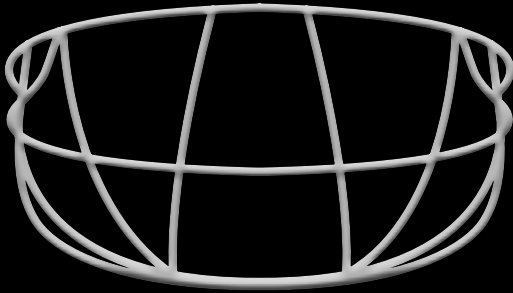
(Junior sizes fit head sizes up to 57cm,  
typically up to 14 years of age)

TRADITIONALLY STYLED, TECHNICALLY ADVANCED -  
SERIOUS HELMET FOR THE SERIOUS CRICKETER

- + Complies with BS7928:2013 Specification for Head Protectors for Cricketers, British Standards Institute
- + High performance monocoque construction delivers excellent impact absorbing properties
- + Robust peak and precisely positioned Geo steel grille greatly reduces the risk of the ball penetrating the gap between the two
- + Fitted with a Geo steel grille as standard
- + Complete with dial adjuster band for ease of fitting and removal of helmet mid innings
- + Improved fit and comfort levels after extensive fitting trials with international and amateur players alike



# GM<sup>®</sup> HELMETS



## GEO<sup>™</sup> STEEL GRILLE

- + Geodesic designs are mathematically proven to be ultra strong structures
- + The use of geodesic designs ensures the grille has optimal impact resistance from all frontal directions
- + All bars of the Geo grille feature properties of geodesic curvature
- + Patent application no. GB 1414762.3 applied for Registered design applied for



AVAILABLE  
COLOURS

## PURIST<sup>®</sup> GEO HELMET 5018

SENIOR LARGE • SENIOR • JUNIOR • JUNIOR SMALL

(Junior sizes fit head sizes up to 57cm, typically up to 14 years of age)

CONTEMPORARY FINISH, TECHNICALLY ADVANCED.

THE PURIST PRO WAS THE MOST DEMANDED HELMET IN THE MARKET - NOW THERE'S THE PURIST GEO

- + Complies with BS7928:2013 Specification for Head Protectors for Cricketers, British Standards Institute
- + Improved peak strength and precisely fitted Geo steel grille greatly reduces the risk of the ball penetrating the gap between the two
- + Fitted with a Geo steel grille as standard
- + Rigid, high impact outer shell with EPS liner withstands great force
- + Complete with dial adjuster band for ease of fitting and removal of helmet mid innings
- + Choice of colours: Navy, Green, Maroon



# GM BAGS

**NEW**

## ORIGINAL DUPLEX WHEELIE

4181  
DVo Closed:  
92cm x 37cm x 48cm  
Volume 163 Litres

DVo Activated:  
92cm x 37cm x 56cm  
Volume 191 Litres -

- + Totally versatile bag giving plenty of luggage space

VERTICAL ACCESS



- + Access to the bag can be made vertically or horizontally meaning better use of space in smaller changing rooms

HORIZONTAL ACCESS



PROTECTIVE

- + 'Bat Cave' preformed bottom section to hold two full sized cricket bats, protecting the bats from damage

4181 - EXPANDS VOLUME BY OVER 15%



4184 - EXPANDS VOLUME BY NEARLY 20%



**DVo**  
DYNAMIC  
VOLUME

EXTENDABLE  
TOP SECTION  
ON BOTH BAGS



ALL TERRAIN TWO-TONE WHEELS



STAND ALONE SYSTEM

**#TomSays**

"Love the DVo feature!  
Just think of all the extra  
kit you have room for!"

**NEW**

## ORIGINAL EASI-LOAD WHEELIE

4184  
DVo Closed:  
92cm x 36cm x 41cm  
Volume 136 Litres

DVo Activated:  
92cm x 36cm x 49cm  
Volume 162 Litres -



TWO FULL SIZE BAT POCKETS







CONCEALABLE COMFORT STRAPS



TWO PAD POCKETS

**NEW**

## ORIGINAL WHEELIE DUFFLE

4177

96cm x 41cm x 32cm  
Volume 126 Litres

- + Versatile manoeuvrability



ADJUSTABLE COMFORT STRAPS

**NEW**

## ORIGINAL DUFFLE

4081

98cm x 36cm x 31cm  
Volume 109 Litres

- + Gusseted side pockets will hold two bats up to Full Size safely and securely
- + Versatile loading and access with a choice of compartments for various equipment combinations

FULL  
LENGTH  
BAT POCKETS

**NEW**

## 909 WHEELIE

4174

88cm x 38cm x 31cm  
Volume 104 Litres



ROOM FOR  
CLUB, SCHOOL,  
SOCIETY OR INDIVIDUAL  
CUSTOMISATION  
ON ALL BAGS



# GM BAGS

AVAILABLE IN 2 COLOURS



**NEW**  
**707 WHEELIE**

4180  
88cm x 31cm x 31cm  
Volume 85 Litres



**NEW**  
**707 DUFFLE**

4179  
76cm x 36cm x 31cm  
Volume 85 Litres



ALL TERRAIN WHEELS

AVAILABLE IN 2 COLOURS



**NEW**  
**606 WHEELIE**

4085  
69cm x 26cm x 31cm  
Volume 56 Litres



**NEW**  
**505 DUFFLE**

4092  
94cm x 40cm x 40cm  
Volume 146 Litres

AVAILABLE IN 2 COLOURS

## BAG SPECIFICATIONS

		SIZE L x W x H (CM)	VOLUME IN LITRES	'dVo' DYNAMIC VOLUME	WHEELIE SYSTEM		FABRIC		STAND ALONE SYSTEM	SHOE TUNNEL	POCKETS				INTEGRATED WALLET/KEYS/ MOBILE POUCH	HANDLES			STRAPS		ZIPS		ANTI-SCUFF CORNER PROTECTION
					INTEGRATED TWO TONE ALL TERRAIN	INTEGRATED ALL TERRAIN	1680 DENIER POLYESTER	600 DENIER POLYESTER			INTEGRATED BAT POCKET	ZIPPED SIDE POCKETS	ZIPPED LID POCKET	ZIPPED END POCKET		MOULDED RUBBER	PADDED	CARRY	PADDED ADJUSTABLE SHOULDER	10mm HEAVY DUTY D' OPENING	RUST PROOF GM DESIGNER		
4181	Original Duplex Wheelie	92 x 37 x 56	191	•	•		•		•		••	••	•		•	••	•	•	•	•	•	•	
4177	Original Wheelie Duffie	96 x 41 x 32	126			•	•				••	••				•	•	••		•	•	•	
4184	Original Easi-Load Wheelie	92 x 36 x 49	162	•	•		•		•		••	••	•			••	•	•	•	•	•	•	
4081	Original Duffie Bag	98 x 36 x 31	109				•			•			•				•	•	••		•	•	
4174	909 Wheelie	88 x 38 x 31	104			•	•						•	•	•	•	•	•	•	•	•	•	
5570	5 Star 808 Wheelie	90 x 28 x 39	98	•		•	•			•		••	•	•	•	•	•	•	•	•	•	•	
4180	707 Wheelie	88 x 31 x 31	85			•	•						•	•	•	•	•	•	•	•	•	•	
4179	707 Duffie	76 x 36 x 31	85				•			•	••							••		•	•	•	
4085	606 Wheelie	69 x 26 x 31	56			•	•				•		•			••	•	•	•	•	•	•	
4092	505 Duffie Bag	94 x 40 x 40	146				•			•				•				•	•	•	•	•	
4079	404 Bag	60 x 28 x 30	50				•				•						•	•	•	•	•	•	
4178	303 Duffie Bag	72 x 34 x 34	83				•											••		•	•	•	
4175	202 Backpack	46 x 30 x 18	25					•						•				••		•	•	•	
4173	101 Batt bag	42 x 28 x 28	33					•										••		•	•	•	





**404 NEW**

4079  
60cm x 28cm x 30cm  
Volume 50 Litres



**202 NEW  
BACKPACK**

4175  
46cm x 30cm x 18cm  
Volume 25 Litres



**NEW  
303  
DUFFLE**

4178  
72cm x 34cm x 34cm  
Volume 83 Litres



**GM EASI-SEAT 4185**  
36cm x 36cm x 9cm when folded  
+ Portable, padded seat cover  
+ 3 cylindrical storage pockets  
+ Adjustable shoulder strap  
(Chair not included)



AVAILABLE IN 2 COLOURS

**NEW  
GM BAT COVER 4061**



**NEW  
FULL LENGTH  
BAT COVER 4056**



**NEW  
BALL BAG 4173**  
42cm x 28cm x 28cm  
+ 24 Ball capacity

## BAG SPECIFICATIONS

CODE	DESCRIPTION	SIZE L x W x H (CM)	VOLUME IN LITRES	'dVo' DYNAMIC VOLUME	WHEELIE SYSTEM		FABRIC		STAND ALONE SYSTEM	SHOE TUNNEL	POCKETS				INTEGRATED WALLET/KEYS/ MOBILE POUCH	HANDLES		STRAPS		ZIPS		ANTI-SCUFF CORNER PROTECTION
					INTEGRATED TWO TONE ALL TERRAIN	INTEGRATED ALL TERRAIN	1680 DENIER POLYESTER	600 DENIER POLYESTER			INTEGRATED BAT POCKET	ZIPPED SIDE POCKETS	ZIPPED LID POCKET	ZIPPED END POCKET		MOULDED RUBBER	PADDED	CARRY	PADDED ADJUSTABLE SHOULDER	10mm HEAVY DUTY D' OPENING	RUST PROOF GM DESIGNER	
4181	Original Duplex Wheelie	92 x 37 x 56	191	•	•	•	•	•	•	•	••	••	•	•	•	••	•	•	••	•	•	•
4177	Original Wheelie Duffie	96 x 41 x 32	126	•	•	•	•	•	•	•	••	••	•	•	•	••	•	•	••	•	•	•
4184	Original Easi-Load Wheelie	92 x 36 x 49	162	•	•	•	•	•	•	•	••	••	•	•	•	••	•	•	••	•	•	•
4081	Original Duffie Bag	98 x 36 x 31	109	•	•	•	•	•	•	•	••	••	•	•	•	••	•	•	••	•	•	•
4174	909 Wheelie	88 x 38 x 31	104	•	•	•	•	•	•	•	••	••	•	•	•	••	•	•	••	•	•	•
5570	5 Star 808 Wheelie	90 x 28 x 39	98	•	•	•	•	•	•	•	••	••	•	•	•	••	•	•	••	•	•	•
4180	707 Wheelie	88 x 31 x 31	85	•	•	•	•	•	•	•	••	••	•	•	•	••	•	•	••	•	•	•
4179	707 Duffie	76 x 36 x 31	85	•	•	•	•	•	•	•	••	••	•	•	•	••	•	•	••	•	•	•
4085	606 Wheelie	69 x 26 x 31	56	•	•	•	•	•	•	•	••	••	•	•	•	••	•	•	••	•	•	•
4092	505 Duffie Bag	94 x 40 x 40	146	•	•	•	•	•	•	•	••	••	•	•	•	••	•	•	••	•	•	•
4079	404 Bag	60 x 28 x 30	50	•	•	•	•	•	•	•	••	••	•	•	•	••	•	•	••	•	•	•
4178	303 Duffie Bag	72 x 34 x 34	83	•	•	•	•	•	•	•	••	••	•	•	•	••	•	•	••	•	•	•
4175	202 Backpack	46 x 30 x 18	25	•	•	•	•	•	•	•	••	••	•	•	•	••	•	•	••	•	•	•
4173	101 Ball bag	42 x 28 x 28	33	•	•	•	•	•	•	•	••	••	•	•	•	••	•	•	••	•	•	•



# GM FOOTWEAR

## #TomSays

"The improvements to the foot bed make this our most comfortable range ever!"



## ICON™ **NEW**

### MULTI-FUNCTION 6410

7 - 13 (FULL SIZES) + 8½ & 9½

### LIGHTWEIGHT UPPER

- + Non-stitch nano TPU film over 3D mesh reduces weight and fatigue whilst providing maximum flexibility, durability and comfort
- + Three dimensional comfort lining for superior, long lasting fit and feel
- + Ergonomic slip lasted construction for consistent sock-like fit time after time
- + Moulded TPR heel cradle locks foot in place maintaining the shoe's integrity and protecting the delicate heel area

### GM loPro SOLE UNIT

- + GM loPro sole unit for a sleek, athletic, functional shoe minus the bulk
- + Compression moulded, lightweight EVA midsole for superior cushioning and comfort
- + Durable, lightweight two tone TPU outsole with strategically placed spikes with supplementary moulded pimple studs for additional grip and stability
- + Injection moulded mid-foot shank provides stability through the arch reducing foot fatigue

### TRI-LAYER CUSHIONING

### TRI-LAYER CUSHIONING

- + Level 1: Ergonomic cold press moulded EVA foot bed with natural latex heel insert
- + Level 2: Cushioned EVA strobel stitched insole board
- + Level 3: Compression moulded phylon midsole providing perfect balance between cushioning and weight

### SUPPLIED WITH 8 REPLACEMENT DURASTUDS



### ERGONOMIC LAST FOR SOCK-LIKE FIT



**ICON™ MULTI-FUNCTION**  
FITTED WITH STEEL SPIKES  
FOR A FULL SPIKE FORMAT



**ICON™ MULTI-FUNCTION**  
FITTED FRONT WITH SPIKES  
AND REAR WITH DURASTUDS  
FOR A 50/50 FORMAT



**ICON™ MULTI-FUNCTION**  
FITTED WITH DURASTUDS  
FOR A FULL MULTISTUD FORMAT



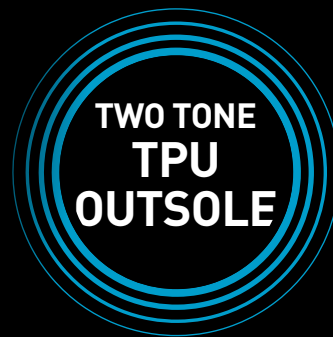
# GM FOOTWEAR



**MAESTRO® MULTI-FUNCTION**  
FITTED WITH STEEL SPIKES



**TWO TONE  
TPU  
OUTSOLE**



## MAESTRO® **NEW**

**MULTI-FUNCTION 6406**  
7 - 13 (FULL SIZES) + 8 1/2 & 9 1/2

### LIGHTWEIGHT UPPER

- + XLO air mesh provides supreme vamp ventilation
- + Three dimensional comfort lining for superior, long lasting fit and feel
- + Ergonomic slip lasted construction for consistent sock-like fit time after time
- + Moulded TPR heel cradle locks foot in place maintaining the shoe's integrity and protecting the delicate heel area

### GM loPro SOLE UNIT

- + GM loPro sole unit for a sleek, athletic, functional shoe minus the bulk
- + Compression moulded, lightweight EVA midsole for superior cushioning and comfort
- + Durable, lightweight two tone TPU outsole with strategically placed spikes with supplementary moulded pimple studs for additional grip and stability
- + Injection moulded mid-foot shank provides stability through the arch reducing foot fatigue

### TRI-LAYER CUSHIONING

- + Level 1: Ergonomic cold press moulded EVA foot bed with natural latex heel insert
- + Level 2: Cushioned EVA strobel stitched insole board
- + Level 3: Compression moulded phylon midsole providing perfect balance between cushioning and weight

## MAESTRO® **NEW**

**JUNIOR MULTI-FUNCTION 6407**  
1 - 6 (FULL SIZES)

## SPARE STUDS

### CRICKET SPIKES 4075

- + Replacement cricket spikes
- + 22 screw-in spikes
- + 1 GM Spanner
- + Blister packed, 12 sets per master carton



### CRICKET SOFT STUDS 4082

- + Durastud replacements
- + 22 screw-in studs
- + 1 GM Spanner
- + Blister packed, 12 sets per master carton

# GM FOOTWEAR

## MAESTRO® **NEW**

**ALL ROUNDER 6408**  
7 - 13 (FULL SIZES)

### LIGHTWEIGHT UPPER

- + XLO air mesh provides supreme vamp ventilation
- + Three dimensional comfort lining for superior, long lasting fit and feel
- + Ergonomic slip lasted construction for consistent sock-like fit time after time
- + Moulded TPR heel cradle locks foot in place maintaining the shoe's integrity and protecting the delicate heel area

### GM loPro SOLE UNIT

- + GM loPro sole unit for a sleek, athletic, functional shoe minus the bulk
- + Compression moulded, lightweight EVA midsole for superior cushioning and comfort
- + Compression moulded rubber outsole with multi cleat configuration for fantastic grip
- + Injection moulded mid-foot shank provides stability through the arch reducing foot fatigue

### TRI-LAYER CUSHIONING

- + Level 1: Ergonomic cold press moulded EVA foot bed with natural latex heel insert
- + Level 2: Cushioned EVA strobel stitched insole board
- + Level 3: Compression moulded phylon midsole providing perfect balance between cushioning and weight



## MAESTRO® **NEW**

**JUNIOR ALL ROUNDER 6409**  
1 - 6 (FULL SIZES)

## HERO™ **NEW**

**ALL ROUNDER 6415**  
1 - 6 (FULL SIZES)

### LIGHTWEIGHT UPPER

- + Wrap around mesh for excellent ventilation and temperature control
- + Sponge PU components for reduced weight without sacrificing durability
- + Moulded TPR heel cradle locks foot in place maintaining the shoe's integrity and protecting the delicate heel area

### SOLE UNIT

- + Natural latex heel insert to foot bed for improved comfort and cushioning
- + One piece compression moulded rubber midsole/outsole
- + Multi-directional cleat configuration for superior grip on any surface
- + Low side profile sole for foot friendly toe to heel offset ratio





# GM TROUSERS

## TEKNIK™ CLUB TROUSERS 7130

S • M • L • XL • XXL

- + Super double stretch 100% Polyester comfort trousers
- + Strategically positioned mesh panels at the lower back for increased cooling and comfort - designed to be worn in conjunction with the new Teknik Club Shirt for maximum cooling effect
- + Quick drying with moisture management built into the yarn for durability
- + Helps to keep the skin dry by wicking moisture away from the body and keeping the garment drier
- + Material weight 220g
- + Navy trim - Inside leg 29", 31" & Unfinished
- + Cream trim - Inside leg Unfinished



TRAVIS HEAD  
AUSTRALIA

## PREMIER TROUSERS

- + Fantastic value and comfort
- + 100% Two-way stretch Polyester fabric
- + Fully elasticated waist
- + Two side pockets

## BOYS TROUSER WITH ADJUSTABLE LEG LENGTHS 7033

XXS • XS • S • M • L

## MENS TROUSER

7034

S • M • L • XL • XXL

- + Inside leg: 29", 31" and Unfinished



# GM SHIRTS

## ICON SHIRT 7014

XTRA SMALL BOYS • SMALL BOYS • MEDIUM BOYS  
• LARGE BOYS • S • M • L • XL • XXL • XXXL

- ✦ Ultra modern, athletic design
- ✦ One piece, self fabric 'V' neck collar
- ✦ Quick drying 100% polyester
- ✦ Stylish use of piping whilst in-keeping with league design restrictions
- ✦ Material weight 180g

	Trim Colour			
Sleeve	Navy	Green	Maroon	Plain
Short	✓	✓	✓	✓



COREY ANDERSON  
NEW ZEALAND



# GM SHIRTS



## TEKNIK™ CLUB SHIRT 7205

XTRA SMALL BOYS • SMALL BOYS • MEDIUM BOYS  
• LARGE BOYS • S • M • L • XL • XXL • XXXL

- + 'League Friendly' design
- + Strategically positioned mesh panels at the lower back and underarm for increased cooling and comfort
- + Quick drying 100% Polyester with moisture management built into the yarn for durability
- + Helps to keep the skin dry by wicking moisture away from the body and keeping the garment drier
- + Material weight 180g
- + Should be used in conjunction with the GM Teknik Trousers

### TEKNIK™ FABRIC

HELPS TO KEEP SKIN DRY AND GARMENTS DRIER

- + LATEST TEXTILE TECHNOLOGY
- + FABRIC YARNS HAVE BUILT-IN CAPILLARY PROPERTIES
- + WICKS MOISTURE AWAY FROM BODY
- + MOISTURE EVAPORATES FROM THE SURFACE AND IS NOT ABSORBED

	Trim Colour			
Sleeve	Navy	Green	Maroon	Plain
Short	✓	✓	✓	✓



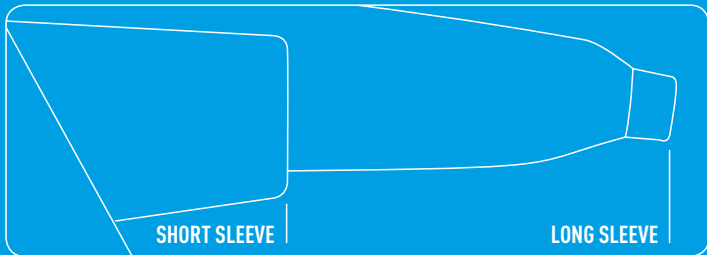
## PREMIER CLUB SHIRT 7000

XTRA SMALL BOYS • SMALL BOYS • MEDIUM BOYS •  
LARGE BOYS • S • M • L • XL • XXL • XXXL

- + 100% Polyester
- + Material weight 170g
- + Designed to fit the movements of all cricketers

### SHORT SLEEVE or LONG SLEEVE

	Trim Colour			
Sleeve	Navy	Green	Maroon	Plain
Short	✓	✓	✓	✓
Long				✓



# GM KNITWEAR & FLEECES



**TRIMMED LONG SLEEVE SWEATER 7042**  
SMALL BOYS • MEDIUM BOYS • LARGE BOYS • S • M • L • XL • XXL

**TRIMMED SLEEVELESS SLIPOVER 7043**  
SMALL BOYS • MEDIUM BOYS • LARGE BOYS • S • M • L • XL • XXL

- Colours available:
- + Green/Gold/Green,
  - + Navy/Sky/Navy,
  - + Navy/Red/Navy,
  - + Maroon/Amber/Maroon

PREMIER KNITWEAR 100% Acrylic, classic heavy cable knit, generously sized, extra long with deep ribbed welt, available plain and with trim colours



**PLAIN LONG SLEEVE SWEATER 7040**  
XTRA SMALL BOYS • SMALL BOYS • MEDIUM BOYS • LARGE BOYS • S • M • L • XL • XXL • XXXL



**PLAIN SLEEVELESS SLIPOVER 7041**  
XTRA SMALL BOYS • SMALL BOYS • MEDIUM BOYS • LARGE BOYS • S • M • L • XL • XXL • XXXL



**PLAIN SLEEVELESS TEKNIK SLIPOVER 7047**  
SMALL BOYS • MEDIUM BOYS • LARGE BOYS • S • M • L • XL • XXL

- + Modern design for the modern cricketer/club
- + Polyester/Fleece combination giving fantastic feel, warmth and comfort
- + Shell Fabric 280g with Fleece lining 175g

**TRIMMED SLEEVELESS TEKNIK SLIPOVER 7049**  
+ Sizes and spec as above. Colours available:  
+ Green/Gold/Green, Navy/Sky/Navy, Navy/Red/Navy, Maroon/Amber/Maroon



**PLAIN LONG SLEEVE TEKNIK SWEATER 7046**  
SMALL BOYS • MEDIUM BOYS • LARGE BOYS • S • M • L • XL • XXL

- + Modern design for the modern cricketer/club
- + Polyester/Fleece combination giving fantastic feel, warmth and comfort
- + Shell Fabric 280g with Fleece lining 175g

**TRIMMED LONG SLEEVE TEKNIK SWEATER 7048**  
+ Sizes and spec as above. Colours available:  
+ Green/Gold/Green, Navy/Sky/Navy, Navy/Red/Navy, Maroon/Amber/Maroon



# GM PERFORMANCE TRAINING WEAR

- + ATHLETIC DESIGN
- + LIGHTWEIGHT

- + CLUB/SCHOOL, CUSTOM PERSONALISATION AVAILABLE.

PLEASE CONTACT CUSTOMER SERVICE



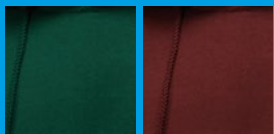
**NEW**

## HOODY 7260

SMALL BOYS • MEDIUM BOYS •  
LARGE BOYS • S • M • L • XL •  
XXL • XXXL [ Navy, Green, Maroon ]

WOMENS 6 • 8 • 10 • 12 •  
14 • 16 • 18 [ Navy only ]

- + 100% Polyester interlock jersey bonded with 100% Polyester anti-pill fleece 300g
- + Drawstring hood



**NEW**

## TRAINING JACKET 7262

SMALL BOYS • MEDIUM BOYS •  
LARGE BOYS • S • M • L • XL •  
XXL • XXXL [ Navy, Green, Maroon ]

WOMENS 6 • 8 • 10 • 12 •  
14 • 16 • 18 [ Navy only ]

- + 100% Polyester Woven Dobby with mesh lining
- + 2 pockets

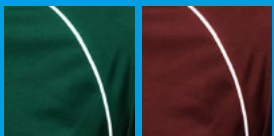
**NEW**

## TRAINING TROUSER 7264

SMALL BOYS • MEDIUM BOYS •  
LARGE BOYS • S • M • L • XL •  
XXL • XXXL [ Navy, Green, Maroon ]

WOMENS 6 • 8 • 10 • 12 •  
14 • 16 • 18 [ Navy only ]

- + 100% Polyester Woven Dobby with mesh lining
- + Elasticated and drawstring waist
- + 2 zipped pockets



**NEW**

## TRAINING SHIRT 7266

SMALL BOYS • MEDIUM BOYS •  
LARGE BOYS • S • M • L • XL •  
XXL • XXXL [ Navy, Green, Maroon ]

WOMENS 6 • 8 • 10 • 12 •  
14 • 16 • 18 [ Navy only ]

- + 100% Polyester Alfa knit 160g



**NEW**

## SHORT 7268

SMALL BOYS • MEDIUM BOYS •  
LARGE BOYS • S • M • L • XL •  
XXL • XXXL [ Navy, Green, Maroon ]

WOMENS 6 • 8 • 10 • 12 •  
14 • 16 • 18 [ Navy only ]

- + 100% Polyester Fuma knit 170g
- + Elasticated and drawstring waist

# GM PERFORMANCE TRAINING WEAR

- ATHLETIC DESIGN
- LIGHTWEIGHT

**NEW****POLO SHIRT 7265**

SMALL BOYS •  
MEDIUM BOYS •  
LARGE BOYS •  
S • M • L • XL • XXL • XXXL  
( Navy, Green, Maroon, White )  
WOMENS 6 • 8 • 10 • 12 •  
14 • 16 • 18 ( Navy only )

- 100% Cotton Pique knit 220g

**NEW****LEISURE JACKET 7261**

SMALL BOYS • MEDIUM BOYS •  
LARGE BOYS • S • M • L • XL •  
XXL • XXXL ( Navy, Green, Maroon )  
WOMENS 6 • 8 • 10 • 12 •  
14 • 16 • 18 ( Navy only )

- 100% Polyester interlock jersey bonded with 100% Polyester anti-pill fleece 300g
- Toggle pull waist

**NEW****GILET 7263**

SMALL BOYS • MEDIUM BOYS •  
LARGE BOYS • S • M • L • XL •  
XXL • XXXL ( Navy, Green, Maroon )  
WOMENS 6 • 8 • 10 • 12 •  
14 • 16 • 18 ( Navy only )

- 100% Polyester interlock jersey bonded with 100% Polyester anti-pill fleece 300g
- Elasticated waist

**FLOPPY HAT 7060**

S • M • L • XL

- 100% white cotton
- Fully lined

**TEKNIK™ CRICKET CAP 7065**

ONE SIZE FITS ALL

- Moisture wicking treatment
- Navy, Green, Maroon
- 100% Polyester
- Pre-shaped two-tone peak
- Easi-fit velcro fastener

**CRICKET CAP 7062**

ONE SIZE FITS ALL

- Navy, Green, Maroon
- Brushed twill
- Pre-shaped two-tone peak
- Easi-fit velcro fastener

**BEANIE HAT 7064**

ONE SIZE FITS ALL

- Green, Navy, Black, Maroon
- Elasticised cotton fabric

**PANAMA HAT 7061**

S • M • L • XL

- Available in Maroon, White, Navy, Green
- 100% cotton
- Reinforced wide brim
- Fully lined

**TEKNIK™ PLUS SOCKS 7157**

ONE SIZE 6-13

One size fits all – this is a technical sock which shrinks in the wash but stretches back to its original size.

The GM Teknik Plus sock combines Merino Wool and polypropylene to help wick away moisture, keeping the feet dry and blister free. The loop pile construction provides fully cushioned comfort.

The double padded sole, incorporating Cordura in the heel and toe, ensure durability and protection and with a specially designed relaxed top, ventilation channels and a flat link toe seam.

Teknik Plus - the ultimate cricket sock!

**TEKNIK™ SOCKS 7155**

ONE SIZE 6-13

With Coolmax® Perfect mix of fabrics gives

- Comfort
- Performance
- Durability

Coolmax® and Dupont® are trade marks of Dupont de Nemours (France) SA

**PREMIER SOCKS 7055**

- Cream SIZES 6-13
- Grey SIZES 1-5 & 6-13
- Sports fabric mix



# GM CRICKET BALLS

## SEAM STITCHES

Maestro	80/85
Super County	80/85
County Star	72/75
Clubman	68/72

## MAESTRO® GRADE A 5½oz 3012 TEST GRADE BALL

- + Dramatically reduces costs with no sacrifice in performance
- + The result of intensive research the Maestro® ball is proven to be indistinguishable in play to the very best of English Grade A balls at a fraction of the price
- + Finest quality choicest butt leather, alum tanned, hand stitched and wax finished
- + Specially formulated pre-shaped compressed cork and fine rubber centre, pure new wool, natural cork layers and fine leather combine to ensure excellent shape retention and perfect 'feel'

3010 SUPER COUNTY GRADE A	5½ oz
3013 SUPER COUNTY GRADE A (Junior)	4¾ oz
3017 SUPER COUNTY GRADE A (White)	5½ oz
3018 SUPER COUNTY GRADE A (Pink)	5½ oz
3019 SUPER COUNTY GRADE A (Womens)	5 oz
3015 COUNTY STAR	5½ oz
3030 CLUBMAN	5½ oz
3031 CLUBMAN (Junior)	4¾ oz
3034 CROWN MATCH	5½ oz
3035 CROWN MATCH (Junior)	4¾ oz

- + All GM leather balls conform to MCC regulations and are hand made to our exacting specifications under close supervision in specialist factories
- + Strict quality control of materials and construction provides superior shape retention, true seams and avoidance of 'hard' balls

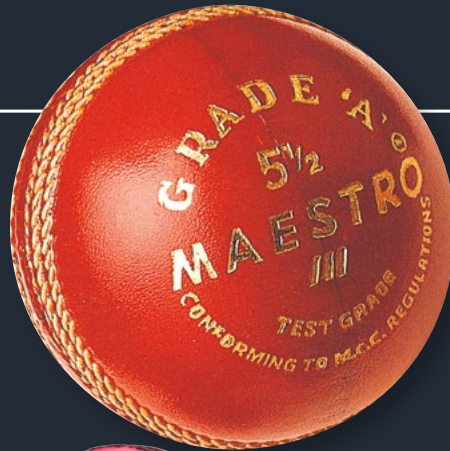
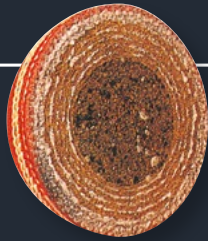


## SKILLS BALL 3040 SENIOR 156G · JUNIOR 135G

- + Red, White, Red/White or Pink
- + Weight and bounce as per a leather cricket ball but without the hardness
- + PVC outer with specially formulated core
- + Durable stitched seam
- + Ideal for developing technique and confidence

## SKILLS BALL BUCKET 3140 24 SKILLS BALLS PER BUCKET

- + Available: Red/White Senior (156g) or Red/White Junior (135g) – no mixed buckets



## ALL-WEATHER BALL 3045 JUNIOR

- + Durable rubber ball for use in all conditions



## FIRST BALL 3042 JUNIOR

- + Similar construction to a tennis ball but with a cricket seam and lower bounce
- + Excellent first ball for primary school children



## TRUBOUNCE™ BALL 3070

- + Soft Ball, ideal for use in training or fun
- + Bounce like a leather cricket ball



## BOWLING MACHINE BALL SENIOR

- + Hard wearing
- + Moulded PVC 5oz ball
- 3090 Box of 6 (Red or Yellow)
- 3095 Bucket of 24 (Red only) **NEW**



## CHEVRON SWING BALL 3051 SENIOR

- + Achieve swing like the professionals
- + Ideal training aid for both bowlers and batsmen. Have fun!



## SWINGKING® 3068 THE REVOLUTIONARY SWINGING BALL

- + Available in Red/Yellow, Red/White, Red/Red, White/White, Orange/Black, Pink/Pink
- + Achieve swing like the professionals
- + Developed specifically for recreational sport, great fun
- + Ideal training aid
- + Durable and tough

## BOWLING DEVELOPMENT PROGRAMME 3080 3 BALL PACK

- Step 1 – First Ball –**  
Low bounce tennis ball with a cricket seam. Excellent 'first ball' for children starting the game of cricket

- Step 2 – Skills Ball –**  
Weight and bounce as per a leather cricket ball but without the hardness. Durable stitched seam. Ideal for developing technique and confidence

- Step 3 – Crown Match Ball –**  
4¾oz leather cricket ball. Experience the real feel of a match ball



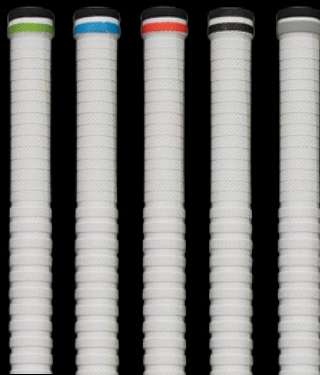


## RUBBER GRIPS

### DYNAMIC 4134

FULL SIZE (SINGLES WITH  
HEADERCARD)

- + White and Black with Green,  
Blue, Electric Red, Black, Silver



### DYNAMIC 4135

FULL SIZE (DOZENS)

- + White and Black with Green,  
Blue, Electric Red, Black, Silver

### #TomSays

*"Depending upon your dominant hand, swap the DYNAMIC  
grip around for most grip where you need it!"*

### SHOCK-ABSORBA™ 4130

FULL SIZE (DOZENS)

- + Revolutionary grip, unique design
- + Great protection to the bottom hand
- + Combines comfort and protection
- + Blue, White, Yellow



### RIPPLE™ 4136

FULL SIZE (SINGLES WITH  
HEADERCARD)

- + White with, Red, Blue, Purple, Yellow,  
Aqua, Black



### RIPPLE™ 4138

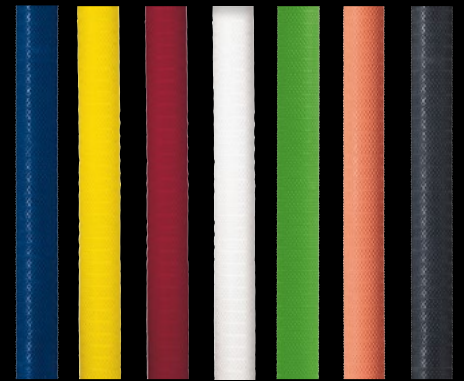
FULL SIZE (DOZENS)

- + White with, Red, Blue, Purple, Yellow,  
Aqua, Black

### CONTROL™ 4124

FULL SIZE (DOZENS)

- + Octane Blue, Yellow,  
Red, White, Argon Green,  
Epic Orange, Black



### PATRIOT 4131

UNION JACK, ST GEORGE,  
SA FLAG, LORD'S TAVERNERS  
(DOZENS)

4133

UNION JACK, ST GEORGE,  
SA FLAG  
(SINGLE GRIP WITH HEADERCARD)



### MATRIX™ 4125

FULL SIZE (DOZENS)

- + Super soft rubber with outstanding grip
- + Epic Orange, Pink, Red, Green,  
Yellow, White

### MATRIX™ 4127

FULL SIZE (SINGLES WITH  
HEADERCARD)

- + Epic Orange, Pink, Red, Green,  
Yellow, White



### BATTING TEE

4052

- + Set of 6



### SEQUENCE SPACERS

4039

- + Set of 50 with carry handle  
for easy storage



### 12" CONES

4037

- + Set of 12 Cones in  
assorted colours



### FIELDING DISCS

4033

- + Set of 30 Fielding Discs



### BOUNDARY FLAGS

4036

- + Set of 30 Boundary Flags



### BOWLERS MARKERS

4038

- + Pair of bowlers markers



### SCOREBOOKS 4040

100 INNINGS

- + Comprehensive analysis  
including end of season statistics



### SCOREBOOKS 4041

60 INNINGS

- + Comprehensive analysis including  
end of season statistics







## ACCESSORIES / STUMPS & BAILS



### BAT REPAIR KIT 4054

Contains:

- + Bat Oil
- + Batcare Cloth
- + Sand Paper
- + Tube of Glue
- + Two Toe Guards



### BAT TAPE 4065

25mm x 10M  
One Roll on header card



### BAT OIL 4063

+ 100ml

### RUBBER GRIP APPLICATOR 4059

- + Ideal for fast easy fitting of rubber grips to handle

### BAT Mallet 4055

- + For "knocking in" bats
- + Durable, two seamless heads



### P.O.S. BALLS BUCKET 4034

- + 60 ball capacity (balls not included)
- + Padded lid

### GRIP APPLICATOR 4057

- + The easy way to change your grip on the cricket bat
- + Works using a vacuum to stretch the grip and then easily fits over the bat handle



### UMPIRES COUNTER 4151

- + Keep track of the numbers of balls bowled per over and the total overs up to 99 – fits comfortably in your pocket

### MENS STUMPS

- + Size out of ground – 28" as recommended by ECB for Mens cricket
- + All stumps are supplied in sets of six, complete with four bails

### TEST 4011 MENS

- + Made in the UK
- + Finest quality straight grained Ash, wax finished

### COUNTY 4014 MENS

- + Made in the UK
- + High quality Beech, wax finished

### CLUB 4025 MENS

- + High quality white Willow

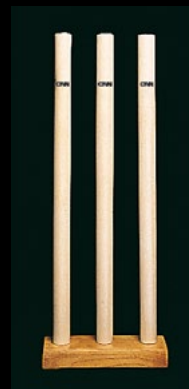


### JUNIOR STUMPS

- + Size out of ground – 27" as recommended by ECB for Junior cricket
- + All stumps are supplied in sets of six, complete with four bails

### COUNTY 4015 JUNIOR

### CLUB 4027 JUNIOR



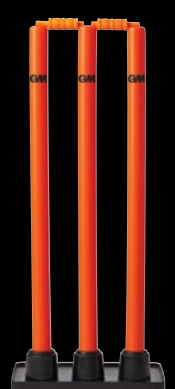
### PLAYGROUND STUMPS 4019

- + 3 stumps loaded on wooden block
- + Size out of ground – 28"
- + Suitable for all age groups
- + Presentation boxed



### SPRINGBAK™ STUMPS 4018

- + 3 stumps loaded on solid cast iron base
- + Ideal for heavy duty use
- + Size out of ground – 28"
- + Suitable for all age groups



### MULTI SURFACE STUMP SET 4013

- + Three removable moulded stumps with bails on heavy duty rubber base
- + Size out of ground – 28"
- + Suitable for all age groups



### BAILS 4020 MENS 9"

- + Ash (4 Bails per set)



### BAILS 4021 YOUTHS 8"

- + Ash (4 Bails per set)



### WHEELIE BIN WICKETS 4024

- + Pack of 20 self adhesive wickets

## NEW MINI BATS



### MINIATURE BATS 4003

17" NEON™  
17" MANA™  
17" CHROME™  
17" PARAGON™  
17" KAHA™

- + Ideal for souvenirs or to collect autographs



### SPRINGBAK™ TARGET STUMP 4026

- + Target stump on steel spring, ideal for fielding drills



### MULTI SURFACE SINGLE STUMP 4031

- + Single removable moulded stump on rubber base



EXCLUSIVE TO GM  
5 STAR DEALERS



**MANA™** L540  
DXM® 808

5S91  
MENS • HARROW •  
6 • 5 • 4

**F4.5 FACE**

**PARAGON™** L555  
DXM® 808

5S81  
MENS  
**F4.5 FACE**

**CHROME™** L555  
DXM® 808

5S13  
MENS • ACADEMY •  
HARROW • 6 • 5 • 4

**F4.5 FACE**

**NEON™** L540  
DXM® 808

5S23  
MENS • HARROW •  
6 • 5 • 4 • 3

**F4.5 FACE**

Perfectly scaled junior bats – the shape of all Junior GM English Willow Bats directly replicate the shape of the Men's version

Help your customers configure their bats @ [www.gm-cricket.com/pages/bat-selector](http://www.gm-cricket.com/pages/bat-selector)





EXCLUSIVE TO GM  
5 STAR DEALERS



## PLAYER EDITION BATS

GM's DXM technology allows us to offer precise replicas of leading GM Players' Bats. Our unique Computer Aided Manufacture produces bats to the precise player profile and dimensions. Now, keen cricketers around the World can use the precise shapes used by GM's top international stars.

PLAYER EDITION bats are available exclusively to GM 5 Star Dealers.

PLAYER EDITION bats are made from LE timber and are finished with prestige PLAYER EDITION identification and superb laser engraved player autographs. GM NOW! and ToeTek™ finish fitted as standard.

PLAYER EDITION bat weights cannot be specified and will be "as finished".

Please note that Team GM product development is a continuous process. PLAYER EDITION configurations shown are those in use by our players at the time of preparation of this Book of Cricket. Updates to PLAYER EDITION availability are shown at [www.gm-cricket.com/playeredition](http://www.gm-cricket.com/playeredition)



**JAMES VINCE**  
ENGLAND

LIKES PICK-UP INDEX 3  
1009

**QUINTON DE KOCK**  
SOUTH AFRICA

LIKES PICK-UP INDEX 3  
1008



**ROSS TAYLOR**  
NEW ZEALAND

LIKES PICK-UP INDEX 3  
1002

**TRAVIS HEAD**  
AUSTRALIA

LIKES PICK-UP INDEX 3  
1013

**KAHA™** L525  
DXM® 808

5S33  
MENS  
F4.5 FACE

**ST30™** L540  
DXM® 808

5S43  
WOMENS  
F4.5 FACE

# GM EXCLUSIVE TO GM 5 STAR DEALERS

ALEX LEES  
ENGLAND



ROUNDED  
FIBRE  
PROTECTION



**808 NEW**  
LIMITED EDITION

5S48  
OSM • MENS • SMALL MENS • YOUTHS • JUNIOR  
Refer to specification chart on pages 20-21

**808 NEW**

5S46  
OSM • MENS • SMALL MENS • YOUTHS • JUNIOR  
Refer to specification chart on pages 20-21







EXCLUSIVE TO GM  
5 STAR DEALERS



VERNON PHILANDER  
SOUTH AFRICA



## 808 **NEW** LIMITED EDITION

5S34  
OSM • MENS • SMALL MENS  
YOUTHS • JUNIOR

Refer to specification chart on pages 16-17



## 808 **NEW**

5S32  
OSM • MENS • SMALL MENS  
YOUTHS • JUNIOR

Refer to specification chart on pages 16-17



## 808 **NEW**

SHINGUARD 5S74  
MENS

Refer to specification chart on page 24

TO BE  
WORN  
BENEATH  
TROUSERS



**NEW**

## 5 STAR 808 WHEELIE

5S70  
DVo Closed:  
90cm x 28cm x 31cm  
Volume 78 Litres

DVo Activated:  
90cm x 28cm x 39cm  
Volume 98 Litres -  
**25% BIGGER THAN 2015**

Refer to specification chart on pages 34-35

GREAT  
VALUE  
LARGE  
WHEELIE



## THE GM PICK-UP INDEX

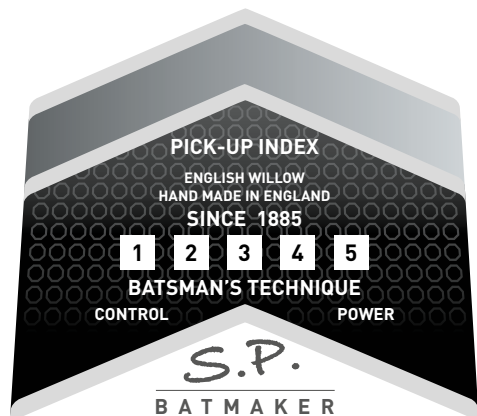
Gunn & Moore English Willow bats are expertly crafted to produce the best balance available from a particular cleft of timber.

Most cricketers appreciate that whilst the absolute weight of a bat is of interest, it is the 'feel' or 'pick-up' of the bat when playing strokes that is more revealing of its character and more useful to tune the bat to the player's technique.

A bat with a 'light' pick-up may well suit a 'touch' batsman more accustomed to guiding or controlling the ball accurately in precise directions, whilst a 'heavier' pick-up bat will be appreciated by batsmen more used to the power game.

Gunn & Moore introduce the GM Pick-Up Index, an assessment made at the factory by the batmaker of the bat's relative pick-up. This is a subjective view as to the type of batsman who may derive maximum performance from the bat, rather like a wine expert recommending a particular vintage to suit an individual's taste.

The Pick-Up Index will prove useful in helping batsmen select a particular Gunn & Moore bat to further develop and exploit their technique to very best advantage.



The Gunn & Moore Pick-Up Index is clearly displayed on all Five Star English Willow bats.

## WHICH GUNN & MOORE BAT?

Selecting a cricket bat is a very personal decision. There are no right or wrong bats, the bat to choose is the one that feels most comfortable for you. We recommend that you always feel the bat before you buy it and that you pick up several bats before making your final choice. Make sure you ask where your bat is made and by whom. All GM DXM English willow bats are made by our own craftsmen in our own factory in Nottingham, England. GM 5 Star dealers carry a wide range of GM bats and will give sound advice. The Gunn & Moore range of bats is designed to suit every technique and budget.

We offer six blade shapes designed using our world leading DXM process:

**NEON™ L540, CHROME™ L555,  
MANA™ L540, PARAGON™ L555,  
KAHA™ L525 & ST30™ L540.**

Each shape has different profile characteristics which are explained in detail on pages 6-11.

We offer English willow bats in eight qualities:

**ORIGINAL L.E., ORIGINAL,  
909, 808, 707, 606, 404 & 303.**

Each quality is developed around different grades of willow which are explained in detail on page 4.

**GM**  
MADE BY  
*England's Best*

The top quality equipment, clothing and footwear described in this brochure has been designed and tested by Gunn & Moore experts and built by craftsmen using the finest selected materials to the exacting standards of craftsmanship for which Gunn & Moore products have been world famous since 1885.

Gunn & Moore reserves the right to make any alterations to the design, material or arrangement of these products which in their view will improve them. We claim intellectual property rights in our products and their trade dress as appropriate, including patents, design registrations, trade marks and copyright. Rigorous action will be taken against all infringers to maintain those rights to protect dealers and users from imitation. The entire contents of this publication are the copyright of Gunn & Moore and may not be reprinted, copied or otherwise duplicated without written consent of the copyright owners.

### Gunn & Moore

Telephone: 0115 985 3500

Fax: 0115 985 3501

Email: [assist@unicorngroup.com](mailto:assist@unicorngroup.com)

Web: [www.gm-cricket.com](http://www.gm-cricket.com)

[www.facebook.com/gmcricket](http://www.facebook.com/gmcricket)

[@GMCricket](https://twitter.com/GMCricket)

[@GMCricket](https://www.instagram.com/GMCricket)

[Gunn & Moore Cricket](https://www.youtube.com/GMCricket)

All returned goods must be sent to

GM Operations Centre,  
Trent Lane, Colwick,  
Nottingham NG2 4DS



©2016 Unicorn  
Products Limited



Catalogue designed by TGV, London

36 16 4000

**SPORTING  
GOODS  
BUSINESS  
AWARDS 2016  
WINNER**



**BEST  
CRICKET  
BRAND**